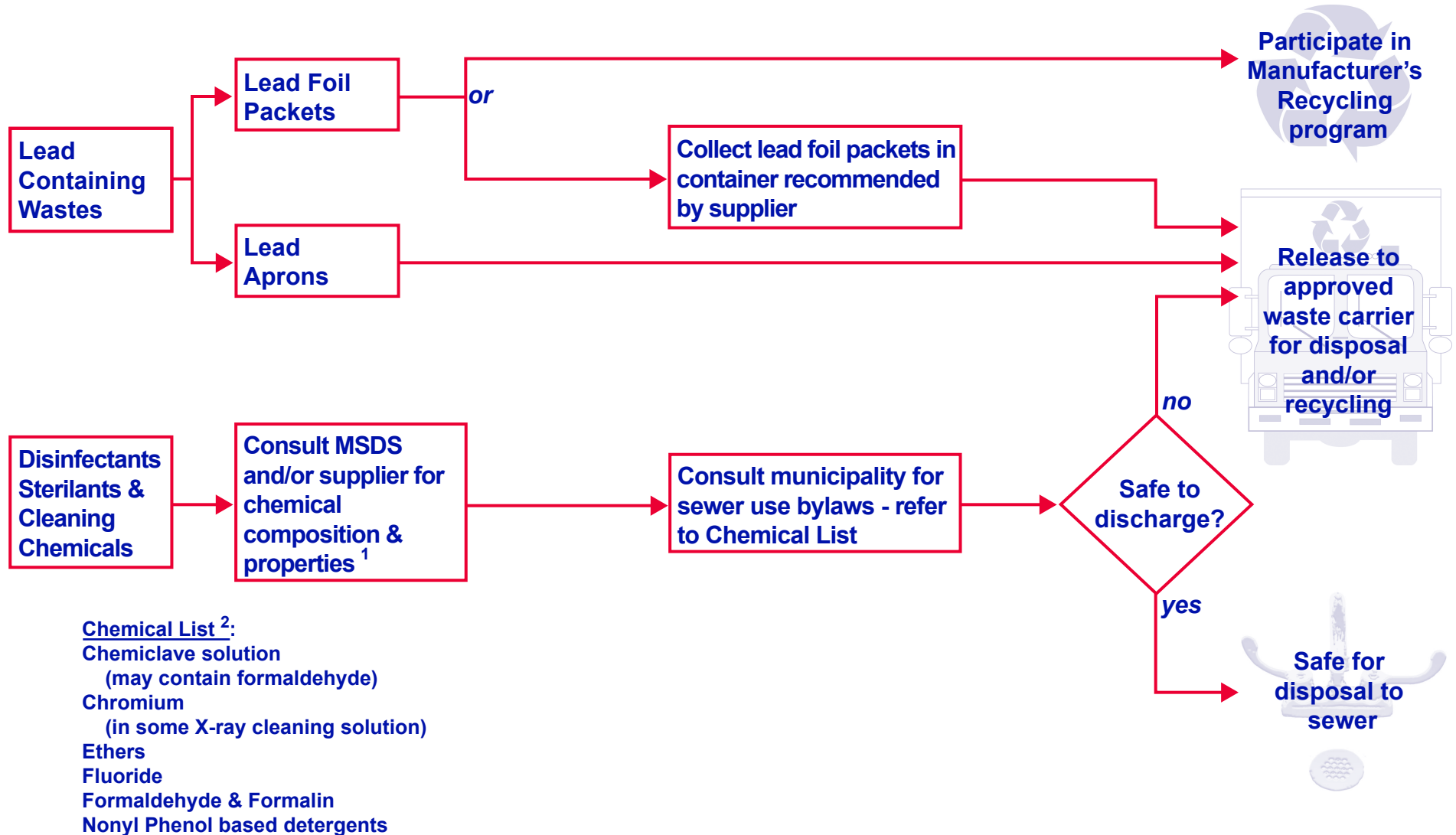


Best Management Practices for the Disposal of Lead Containing and Other Chemical Wastes in Ontario

Dental practices discharging to a private septic system should consult local municipality for guidance on this class of dental waste.



1. Consult supplier for chemical composition information if the composition of proprietary chemical mixture is not listed in the supplied Material Safety Data Sheet (MSDS).
 2. This list is not exhaustive since different municipalities have different sewer use requirements. Please contact local municipality for local requirements.

